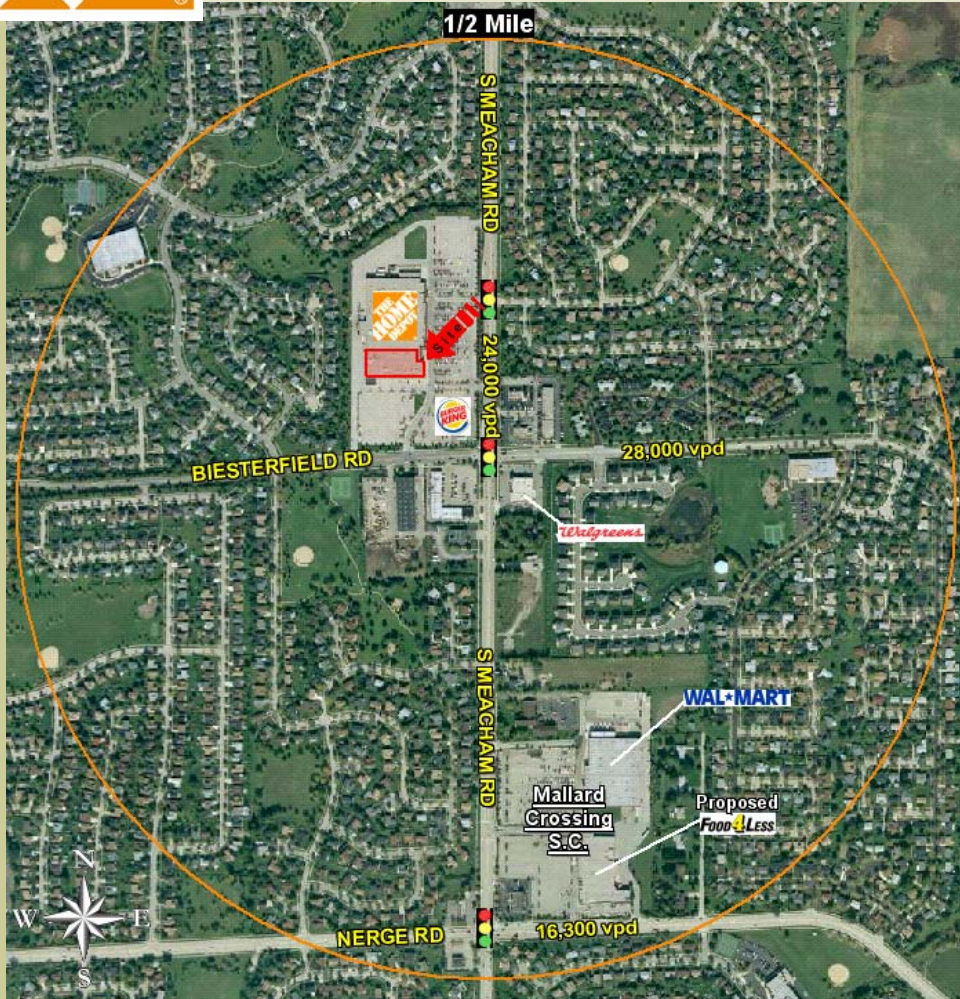




# Join The Home Depot

## Elk Grove Village, Illinois



**Location:**

NWC Meacham & Biesterfield Rds

**Zoning:**

B-2 General Business

**Size:**

2,000 - 67,215 sf

**Traffic:**

Meacham-24,000 vpd  
Biesterfield-28,000 vpd

**Demographics (2003) -**

Three-mile radius  
Population: 82,133  
Households: 32,533  
Average Household income: \$81,704



Exclusive Agent—Matthew J. Moran

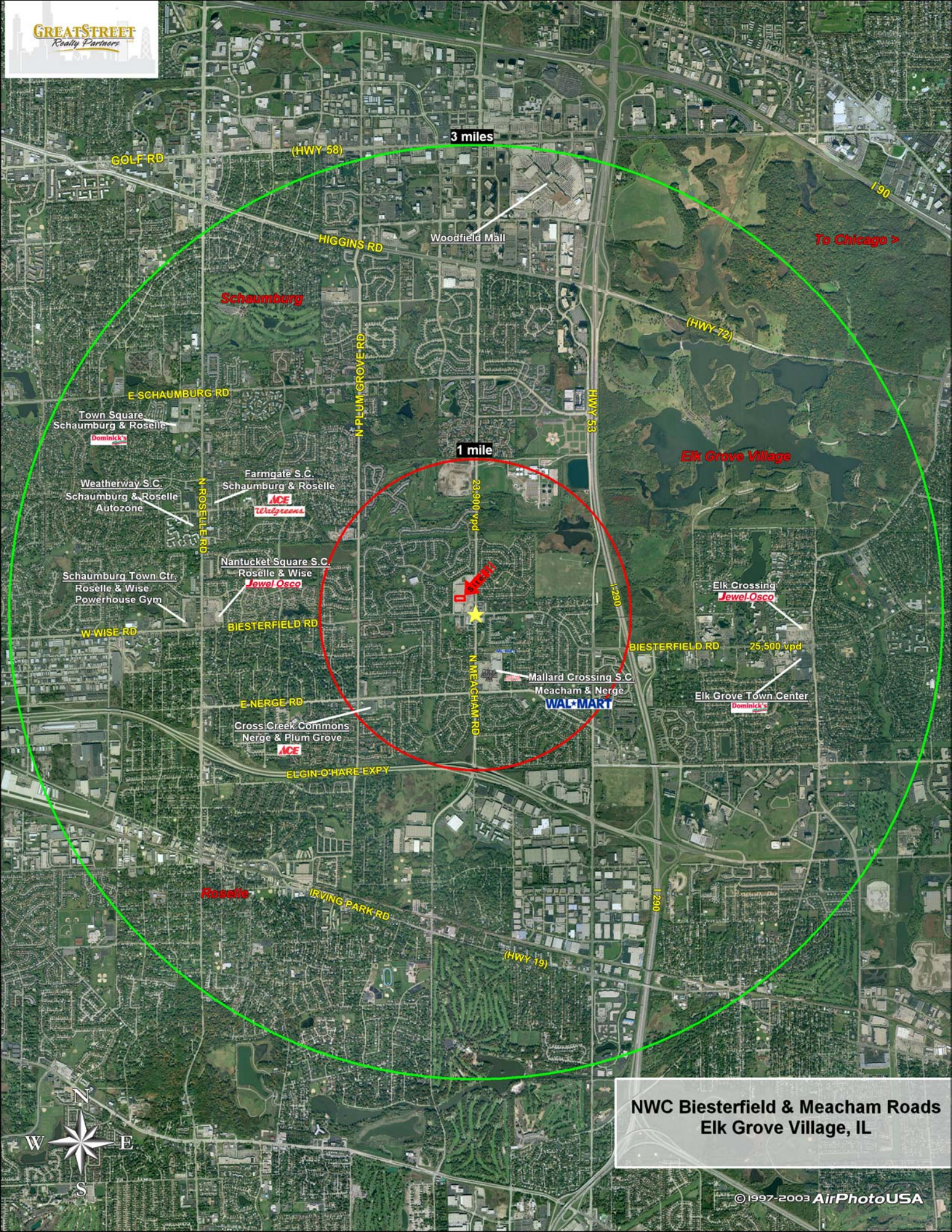
GreatStreet Realty Partners, LLC

For more information Contact:

Matthew J. Moran • matt@greatstreetrealty.com

1701 Golf Road, Suite 3-203 • Rolling Meadows, IL 60008 • Ph: (847) 472.5012 • Fx: (847) 981.0047

The information contained herein has been obtained from sources believed reliable. While we do not doubt its accuracy, we have verified it and make no guarantee, warranty or representation about it. It is your responsibility to independently confirm its accuracy and completeness. Any projections, opinions, assumptions or estimates used are for example only and do not represent the current or future performance of the property. The value of this transaction to you depends on tax, and other factors which should be evaluated by your tax, financial and legal advisors. You and your advisors should contact a careful, independent investigation of the property to determine to your satisfaction the suitability of the property for your needs.



GOLF RD

(HWY 58)

3 miles

I-90

To Chicago >

Schaumburg

HIGGINS RD

Woodfield Mall

(HWY 72)

E SCHAUMBURG RD

N PLUM GROVE RD

HWY 53

1 mile

Elk Grove Village

Town Square  
Schaumburg & Roselle

Dominick's

Weatherway S.C.  
Schaumburg & Roselle  
Autozone

Farmgate S.C.  
Schaumburg & Roselle

ACE

Walgreens

23,900 vpd

Schaumburg Town Ctr.  
Roselle & Wise  
Powerhouse Gym

Nantucket Square S.C.  
Roselle & Wise

Jewel Osco

W WISE RD

N ROSELLE RD

BIESTERFIELD RD

BIESTERFIELD RD

Elk Crossing  
Jewel Osco

25,500 vpd

E NERGE RD

Cross Creek Commons  
Nerge & Plum Grove

ACE

Mallard Crossing S.C.  
Meacham & Nerge

WAL-MART

Elk Grove Town Center

Dominick's

ELGIN-O'HARE EXPY

N MEACHAM RD

1-290

1-290

1-290

Roselle

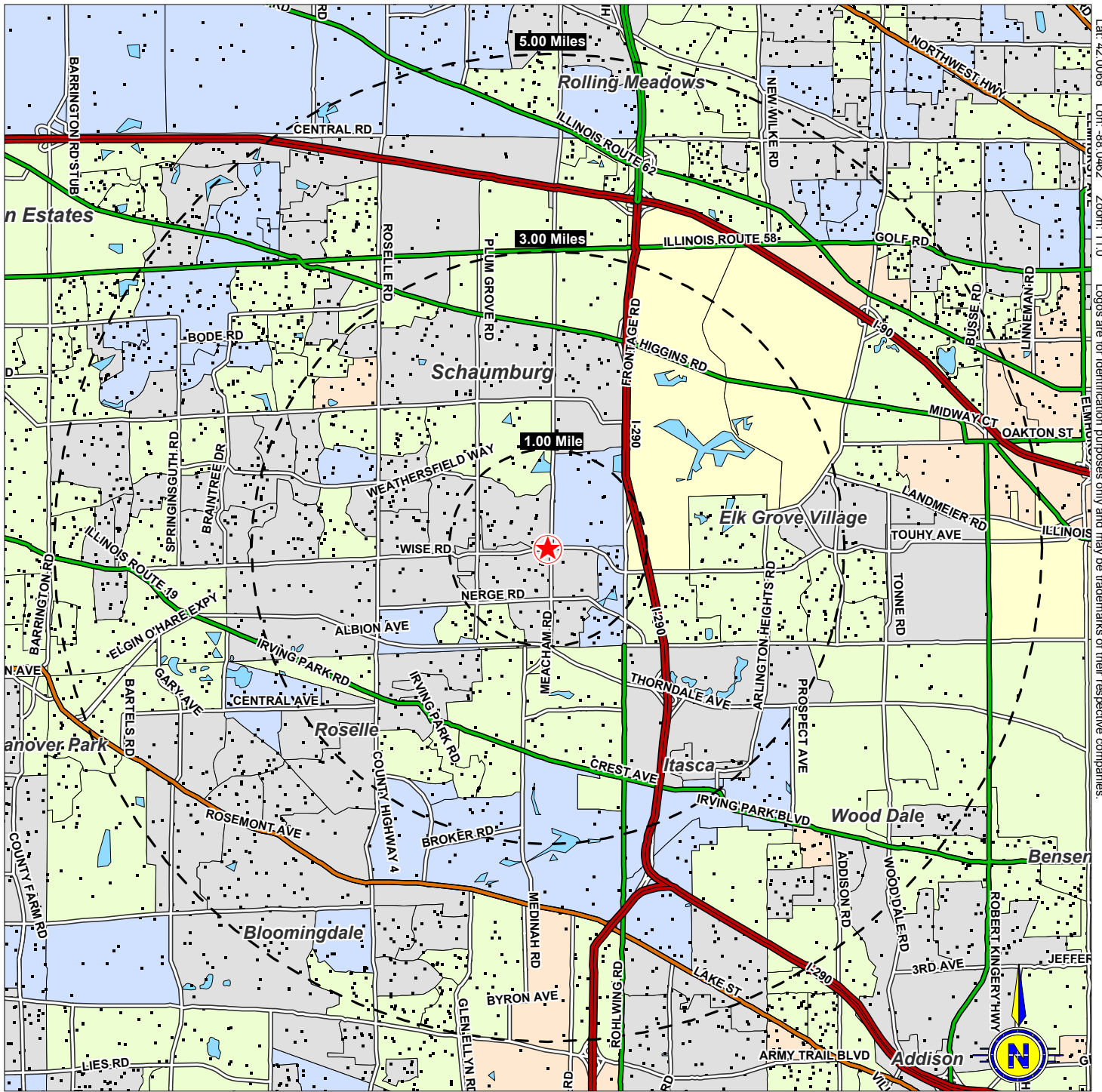
IRVING PARK RD

(HWY 19)

NWC Biesterfield & Meacham Roads  
Elk Grove Village, IL







Lat: 42.0088 Lon: -88.0462 Zoom: 11.0  
Logos are for identification purposes only and may be trademarks of their respective companies.

Data Source: Applied Geographic Solutions

©2004, SITES USA, Inc., Tempe, AZ (480) 491-1112. All Rights Reserved.

**Population Density**  
 One Dot = 100 Persons


**Average HH Income**  
 By Block Group

- \$100,000 or more
- \$75,000 to \$100,000
- \$50,000 to \$75,000
- \$30,000 to \$50,000
- Less than \$30,000

**Meacham & Biesterfield Rds**  
**Elk Grove Village, IL**

**Current Year Estimated**  
**Average Household Income**

August 2004



This map was produced using data from private and government sources deemed to be reliable. The information herein is provided without representation or warranty.

# SUMMARY DEMOGRAPHIC PROFILE

2000 Census, 2003 Estimates & 2008 Projections

Calculated using proportional block groups



Lat/Lon: 42.0068/-88.0462

August 2004

RS1

| <b>Meacham &amp; Biesterfield Rds<br/>Elk Grove Village, IL</b> |   | <b>1.00 mi<br/>radius</b> | <b>3.00 mi<br/>radius</b> | <b>5.00 mi<br/>radius</b> |
|---|---|---------------------------|---------------------------|---------------------------|
| <b>POPULATION</b>   | 2003 Estimated Population                       | 13,103                    | 82,133                    | 255,412                   |
|   | 2008 Projected Population                       | 12,810                    | 82,097                    | 256,998                   |
|   | 2000 Census Population                          | 13,335                    | 82,335                    | 254,166                   |
|   | 1990 Census Population                          | 13,377                    | 77,065                    | 236,031                   |
|   | Historical Annual Growth 1990 to 2003           | -0.2%                     | 0.5%                      | 0.6%                      |
|   | Projected Annual Growth 2003 to 2008            | -0.4%                     | -0.0%                     | 0.1%                      |
|   | 2003 Median Age                                 | 37.2                      | 38.5                      | 36.3                      |
| <b>HOUSEHOLDS</b>   | 2003 Estimated Households                       | 4,529                     | 32,533                    | 96,566                    |
|   | 2008 Projected Households                       | 4,421                     | 32,585                    | 97,369                    |
|   | 2000 Census Households                          | 4,615                     | 32,586                    | 96,023                    |
|   | 1990 Census Households                          | 4,453                     | 28,862                    | 86,560                    |
|   | Historical Annual Growth 1990 to 2003           | 0.1%                      | 1.0%                      | 0.9%                      |
|   | Projected Annual Growth 2003 to 2008            | -0.5%                     | 0.0%                      | 0.2%                      |
| <b>POPULATION<br/>BY RACE</b>                                   | 2003 Estimated White                            | 84.8%                     | 84.7%                     | 80.9%                     |
|   | 2003 Estimated Black or African American        | 1.2%                      | 2.0%                      | 2.9%                      |
|   | 2003 Estimated Asian & Pacific Islander         | 11.5%                     | 10.1%                     | 10.7%                     |
|   | 2003 Estimated American Indian & Native Alaskan | 0.1%                      | 0.1%                      | 0.2%                      |
|   | 2003 Estimated Other Races                      | 2.4%                      | 3.1%                      | 5.4%                      |
|   | 2003 Estimated Hispanic                         | 6.0%                      | 7.4%                      | 12.2%                     |
| <b>INCOME</b>   | 2003 Estimated Average Household Income         | \$ 91,198                 | \$ 81,704                 | \$ 77,761                 |
|   | 2003 Estimated Median Household Income          | \$ 77,765                 | \$ 67,913                 | \$ 66,820                 |
|   | 2003 Estimated Per Capita Income                | \$ 31,587                 | \$ 32,691                 | \$ 29,640                 |
| <b>EDUCATION (AGE 25+)</b>                                      | 2003 Elementary                                 | 1.7%                      | 3.0%                      | 5.0%                      |
|   | 2003 Some High School                           | 4.0%                      | 6.2%                      | 7.1%                      |
|   | 2003 High School Graduate                       | 27.1%                     | 26.1%                     | 25.6%                     |
|   | 2003 Some College                               | 23.0%                     | 23.7%                     | 23.5%                     |
|   | 2003 Associates Degree Only                     | 7.1%                      | 6.7%                      | 6.5%                      |
|   | 2003 Bachelors Degree Only                      | 26.1%                     | 23.8%                     | 22.5%                     |
|   | 2003 Graduate Degree                            | 11.0%                     | 10.5%                     | 9.7%                      |
| <b>BUSINESS</b>   | Number of Businesses                            | 224                       | 4,376                     | 13,566                    |
|   | Total Number of Employees                       | 2,252                     | 75,215                    | 226,693                   |
|   | Employee Population per Business                | 10.1                      | 17.2                      | 16.7                      |
|   | Residential Population per Business             | 58.5                      | 18.8                      | 18.8                      |

This report was produced using data from private and government sources deemed to be reliable. The information herein is provided without representation or warranty.