



# UP TO 5,000 SF FORMER AT&T SPACE AVAILABLE

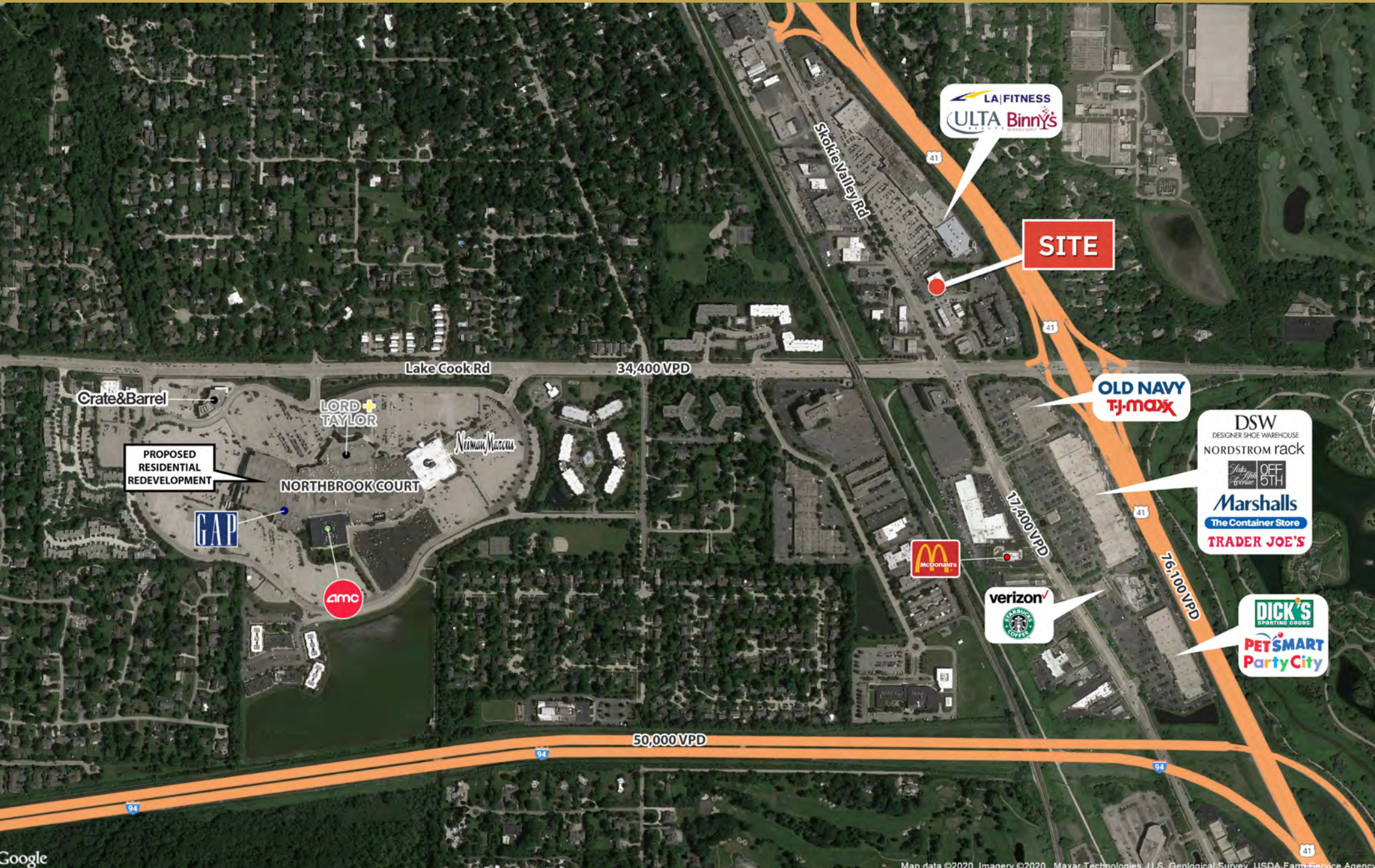
59-83 Skokie Valley Road  
Highland Park, IL

# UP TO 5,000 SF FORMER AT&T SPACE AVAILABLE

59-83 Skokie Valley Road | Highland Park, IL



## AERIAL

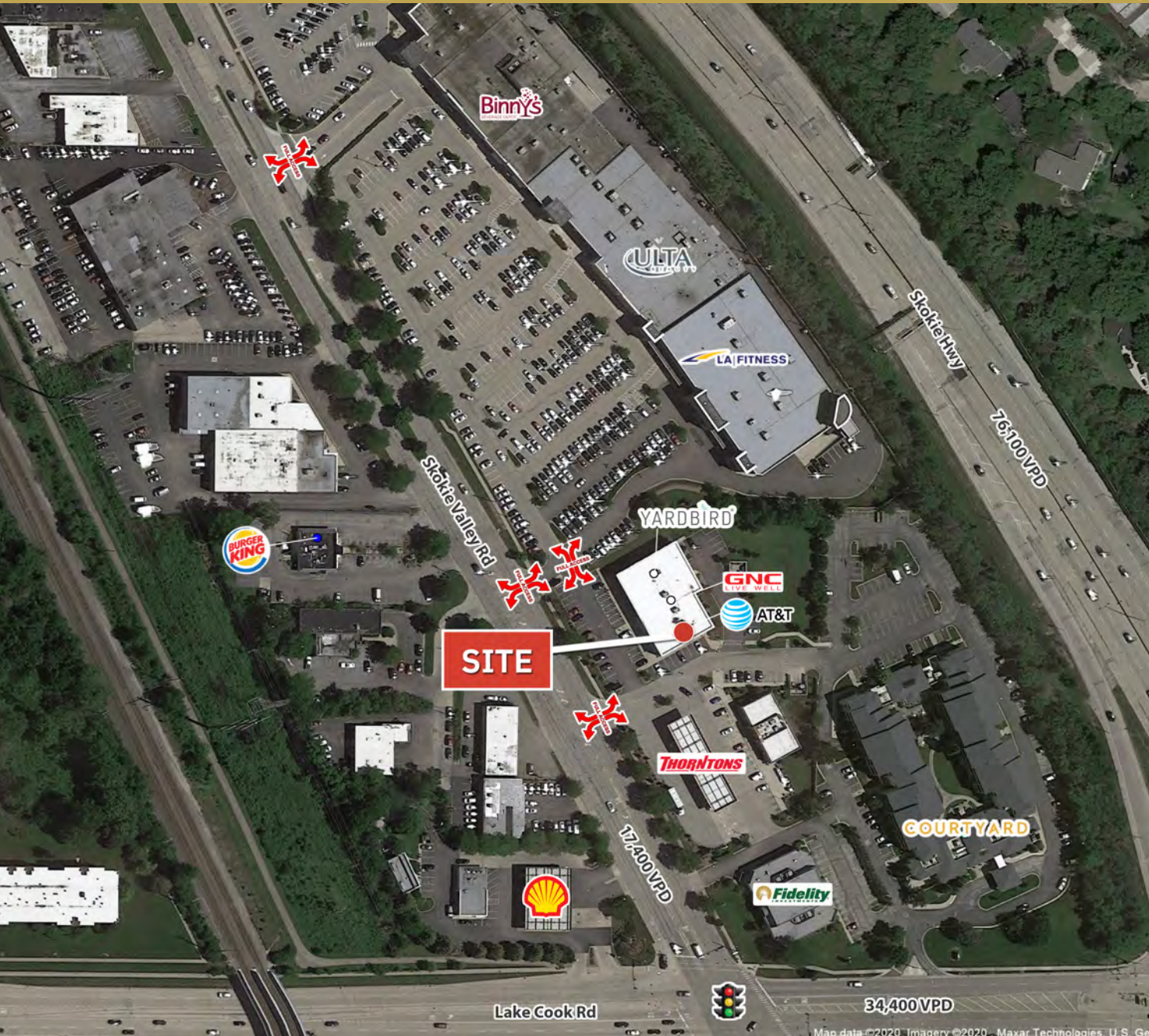


# UP TO 5,000 SF FORMER AT&T SPACE AVAILABLE

59-83 Skokie Valley Road | Highland Park, IL



## PROPERTY OVERVIEW



- Located just north of Lake Cook Rd with great visibility off of Skokie Valley Rd
- Cross access with adjacent power center
- Adjacent to GNC and Yardbird with highest pylon sign
- Border of Cook County and Lake County

DEMOGRAPHICS		
<b>TOTAL POPULATION</b>	1 MILE	5,360
	3 MILE	59,138
	5 MILE	137,521
<b>DAYTIME POPULATION</b>	1 MILE	13,835
	3 MILE	67,793
	5 MILE	141,199
<b>AVERAGE HH INCOME</b>	1 MILE	\$199,989
	3 MILE	\$244,951
	5 MILE	\$237,585

The information provided herein has either been given to us by the owner of the property or obtained from sources that we deem reliable. We have no reason to doubt its accuracy but we do not guarantee it. You should conduct a careful, independent investigation on the property and verify all information. Any reliance on this information is solely at your own risk.

# UP TO 5,000 SF FORMER AT&T SPACE AVAILABLE

59-83 Skokie Valley Road | Highland Park, IL



## SITE PLAN

