



**4,895 SF AVAILABLE
JOIN 34,533 SF REGIONAL MEDICAL TENANT
IDEAL FOR MEDICAL**

**1508 Aurora Avenue
Naperville, IL**



WILL KREUZER
312.914.9400
will@tartanrealtygroup.com

MIKE SCHERTLER
312.718.2157
mike@greatstreetrealty.com

AERIAL



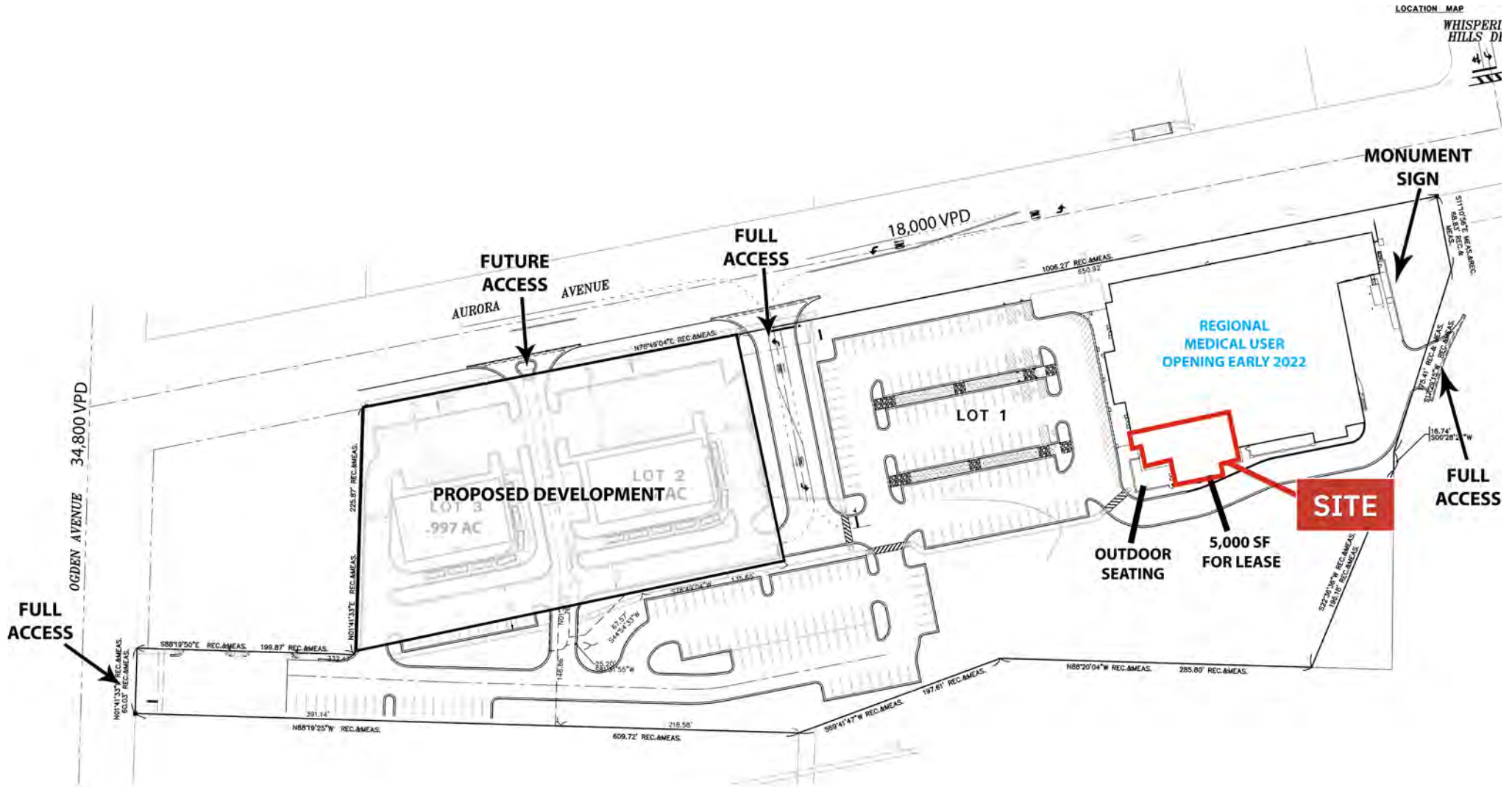
- Ideal for Medical Office, proximate to Edwards Hospital
- Full access and video LED monument signs on Ogden Ave. and Aurora Ave.
- Naperville was ranked as the wealthiest city in the midwest and 11th wealthiest in the nation
- Two miles from Downtown Naperville

The information provided herein has either been given to us by the owner of the property or obtained from sources that we deem reliable. We have no reason to doubt its accuracy but we do not guarantee it. You should conduct a careful, independent investigation on the property and verify all information. Any reliance on this information is solely at your own risk.

4,895 SF AVAILABLE
1508 Aurora Avenue | Naperville, IL



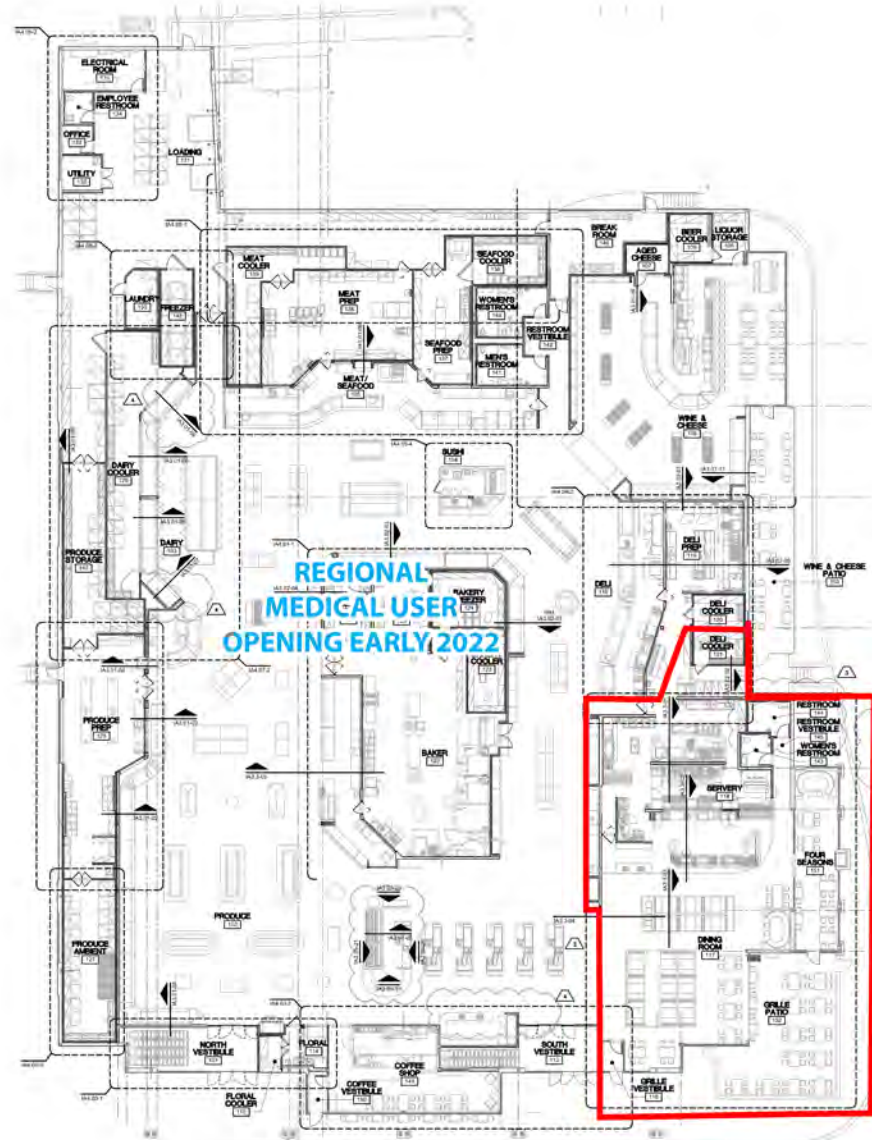
SITE PLAN



The information provided herein has either been given to us by the owner of the property or obtained from sources that we deem reliable. We have no reason to doubt its accuracy but we do not guarantee it. You should conduct a careful, independent investigation on the property and verify all information. Any reliance on this information is solely at your own risk.



FLOOR PLAN



1 DIMENSIONED FIRST FLOOR PLAN
SCALE: 3/32" = 1'-0"

DEMOGRAPHICS		
TOTAL POPULATION	1 MILE	11,231
	2 MILE	41,312
	3 MILE	88,984
DAYTIME POPULATION	1 MILE	5,573
	2 MILE	50,885
	3 MILE	84,664
AVERAGE HH INCOME	1 MILE	\$141,177
	2 MILE	\$131,480
	3 MILE	\$141,775